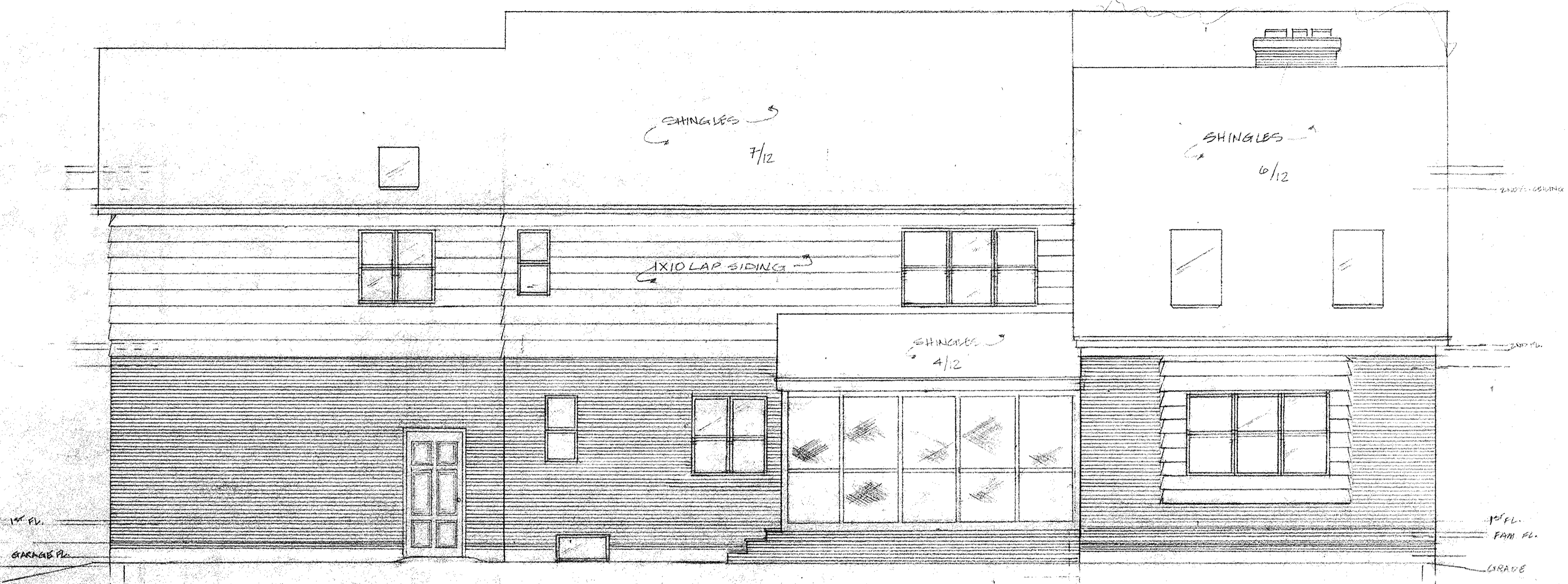


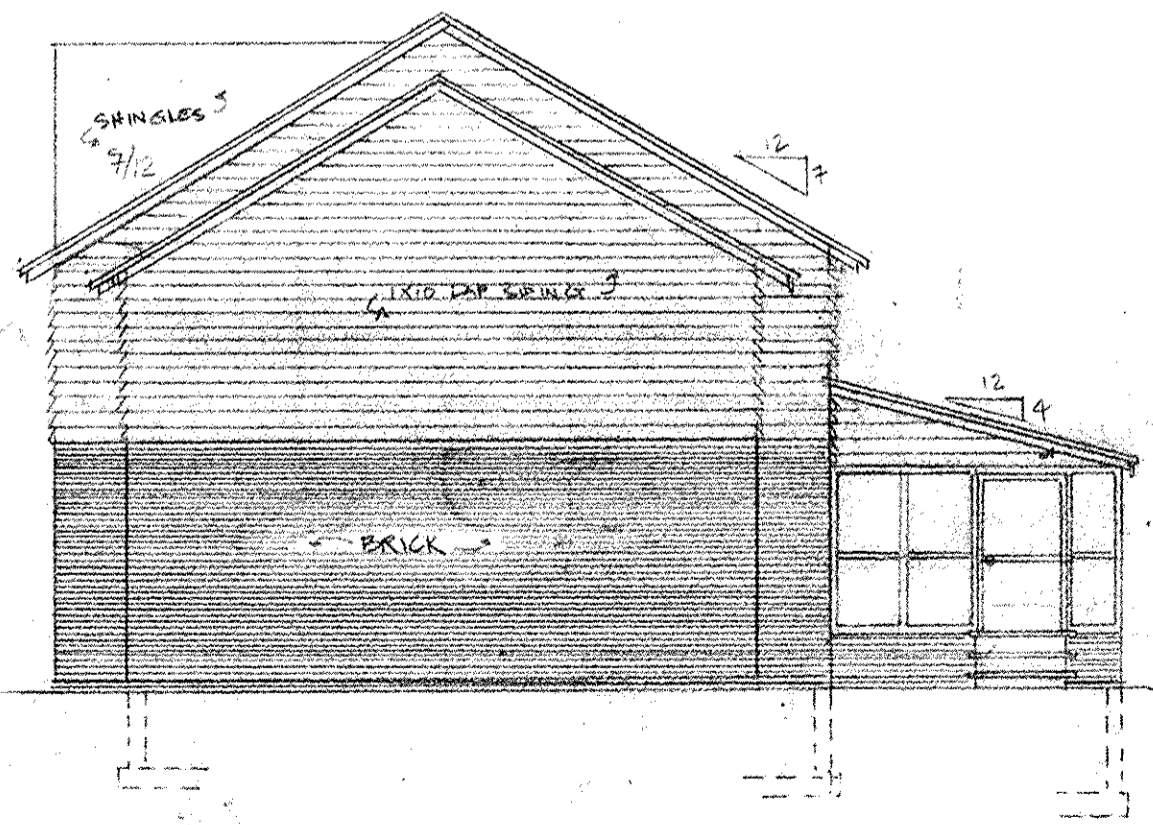
FRONT ELEVATION

**ARMANDO QUARRINI CONSTRUCTION, INC.**  
 REAL ESTATE, DEVELOPER, DESIGN, BUILDING, CONSULTANTS  
**ENTWOOD HOMES**  
 5885 STATE PARKWAY, SUNGERSVILLE, OHIO

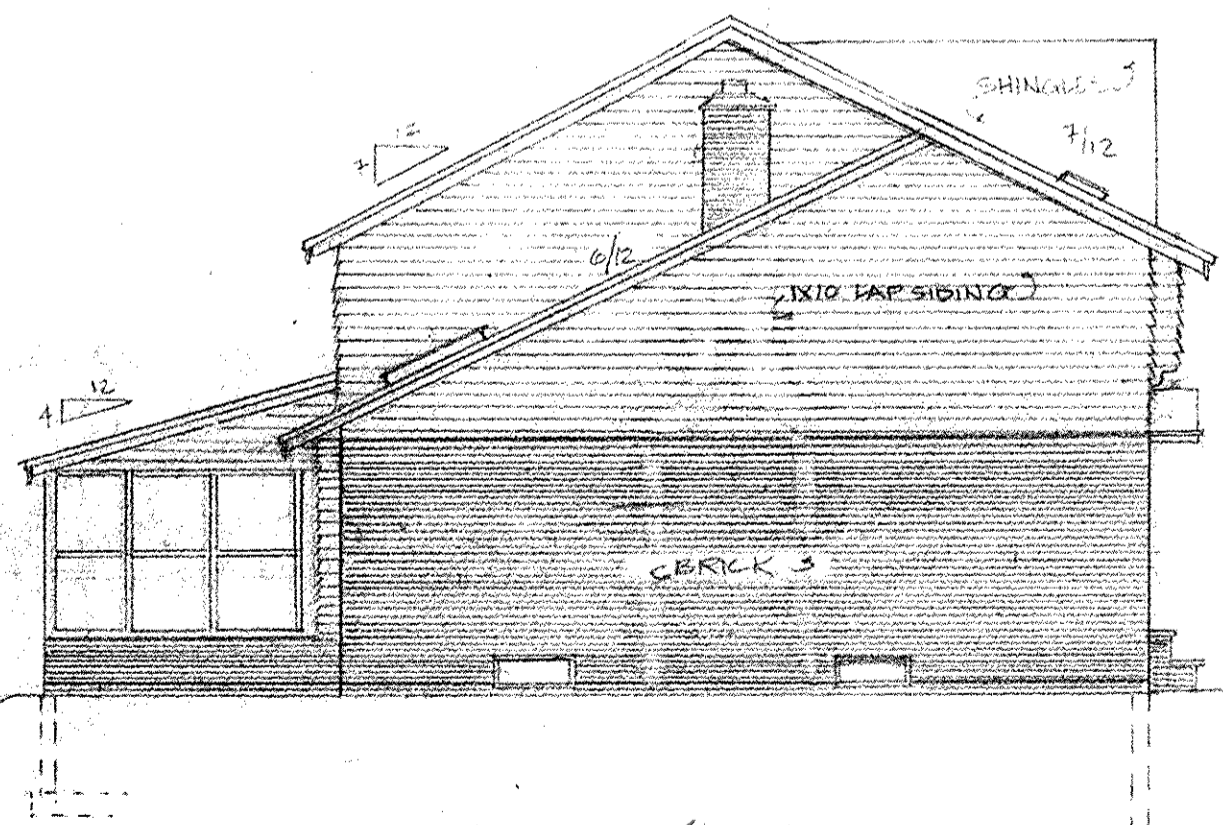
DATE	REVISION	DATE	REVISION
02/28/87	ENTIRE PLAN	12/19/87	DATE
10/17/87	CH. WINDOWS TO DEL. HEIGHT		
12/18/87	CH. FIREPLACES, REDUCED TO HALF		
BUILDING CONTRACTOR: <b>MR. BRODSKY &amp; MS. EMMER</b> DRAWINGS MAY NOT BE REPROD OR DISPLAYED WITHOUT WRITTEN PERMISSION FROM ARMANDO QUARRINI CONSTRUCTION, INC. ANY CHANGES OF PLANS OR SPECIFICATIONS OR MATERIALS ARE SUBJECT TO APPROVAL BY ARMANDO QUARRINI CONSTRUCTION, INC. (GENERAL DEPT.) DRAWN BY: <b>D. CHAFFERS</b>		DATE	12/19/87
NO. #	35		
SHEET #	35		
			<b>1</b>



REAR ELEVATION  
SCALE: 1/4" = 1'-0"



RIGHT ELEVATION  
SCALE: 1/8" = 1'-0"



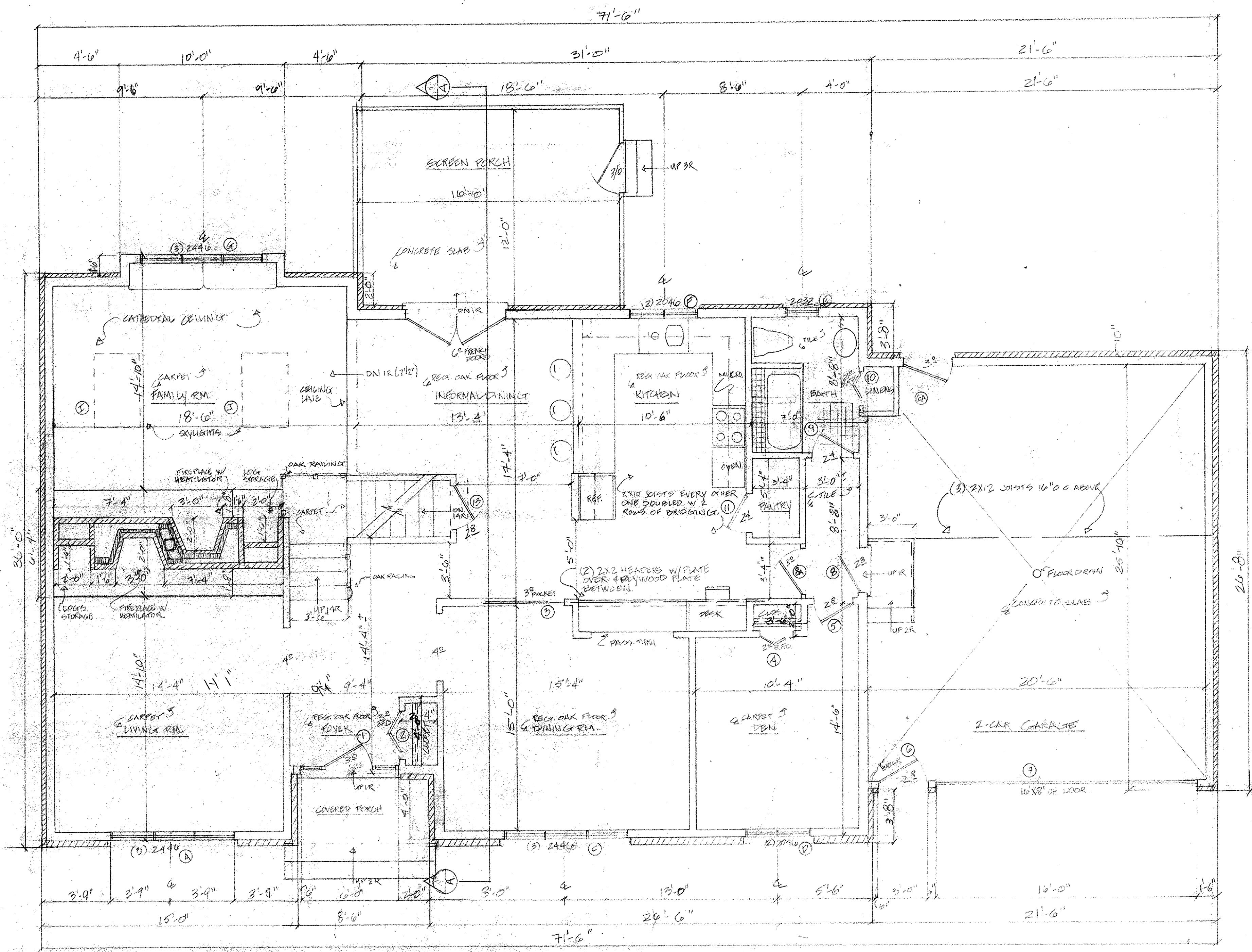
LEFT ELEVATION  
SCALE: 1/8" = 1'-0"

ARMAND QUADRINI  
CONSTRUCTION, INC.  
RES. BLDG. DEVELOPER  
DESIGNS, BUILDERS, CONSULTANTS.  
BENTWOOD HOMES  
5885 STATE PARK RD., SULLY, IOWA 50157


DATE	REVISION
6-22-88	CHANGE ALL PLANS
10-19-88	CH. WINDOWS TO BRK. HULLIG
12-18-88	CH. FIRE PLACE, REDUCE 4" (1/4")
1-22-89	ADD PORCH

BRIDGING RESIDENCE FEE  
MR. DROPSKY & MRS. SALLER  
DRAWINGS MAY NOT BE REPROD OR COPIED WITHOUT EXPRESS WRITTEN PERMISSION FROM ARMAND QUADRINI CONSTRUCTION, INC. ANY CHANGES OF PLANS OR SUBSTITUTION OF MATERIALS ARE SUBJECT TO APPROVAL BY ARMAND QUADRINI CONSTRUCTION, INC. (DESIGN DEPT.)  
DRAWN BY D. L. HARTERS  
DATE 1/22/88  
SCALE AS NOTED

JOB # 35  
SHEET #



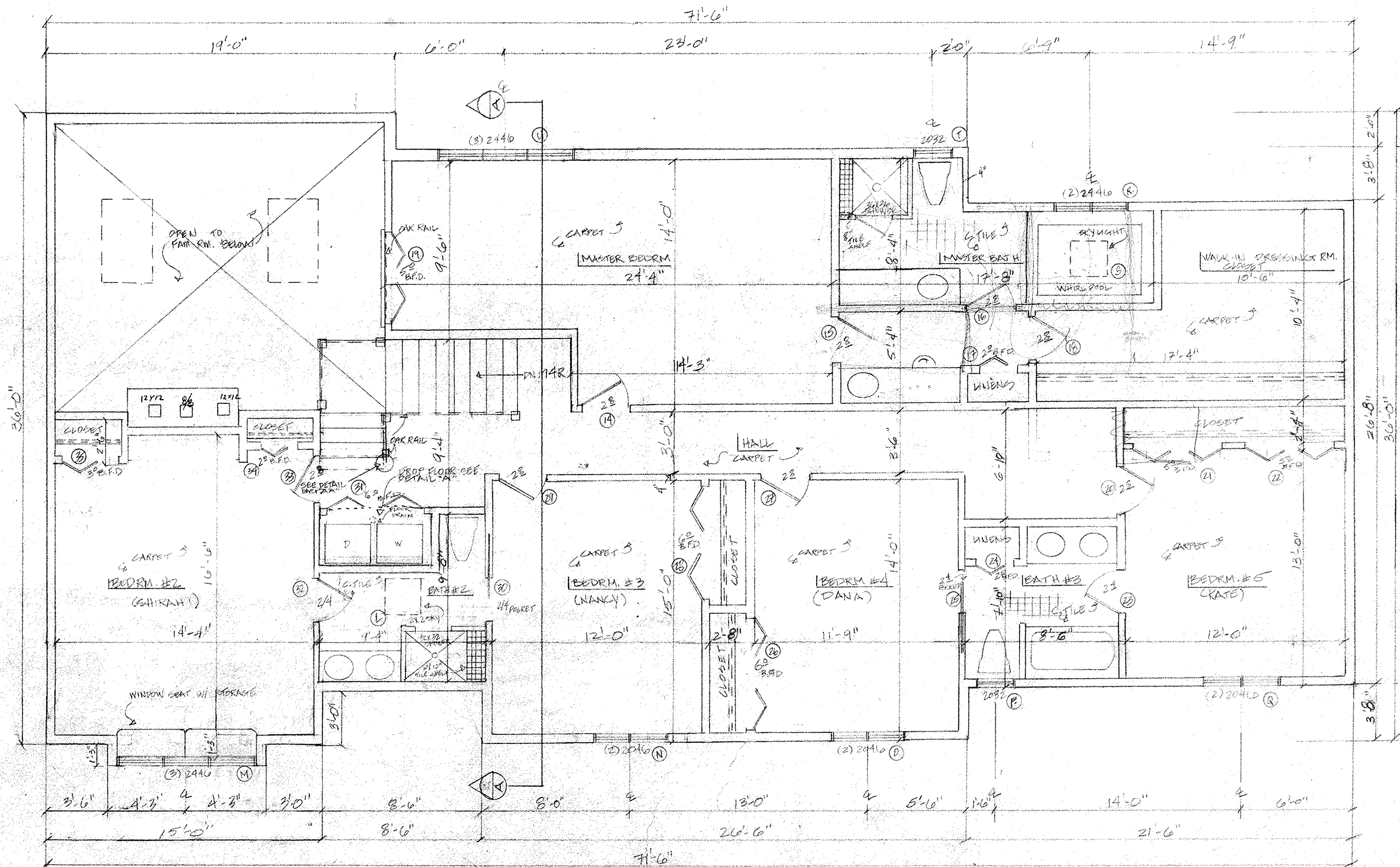
FIRST FLOOR PLAN


**ARMAND QUADRINI CONSTRUCTION INC.**  
 REAL ESTATE DEVELOPER  
 DESIGNER, ENGINEER, CONSULTANTS  
**BENTWOOD HOMES**  
 885 STATE FARM RD, SUNNYSIDE, NY 11210

DATE	REVISION
6-28-87	CH. ENTIRE PLAN
10-19-87	CH. WINDOWS TO DEL. HINGE
12-18-87	CH. FIRE PLACE, REDUCE BT TO 10' X 24"

DRAWING RESPONSIBLE FOR:  
**MR. BRODSKY & MS. EANNER**  
 DATE: 6/18/87  
 SHEET # 35  
 DRAWING BY: D. CHAFFERS

DRAWINGS MAY NOT BE REPRODUCED WITHOUT EXPRESS WRITTEN PERMISSION FROM ARMAND QUADRINI CONSTRUCTION, INC. ANY CHANGES OF PLANS OR SUBSTITUTION OF MATERIALS ARE SUBJECT TO APPROVAL BY ARMAND QUADRINI CONSTRUCTION, INC. (DESIGNER/EST.)  
 SHEET # **35**



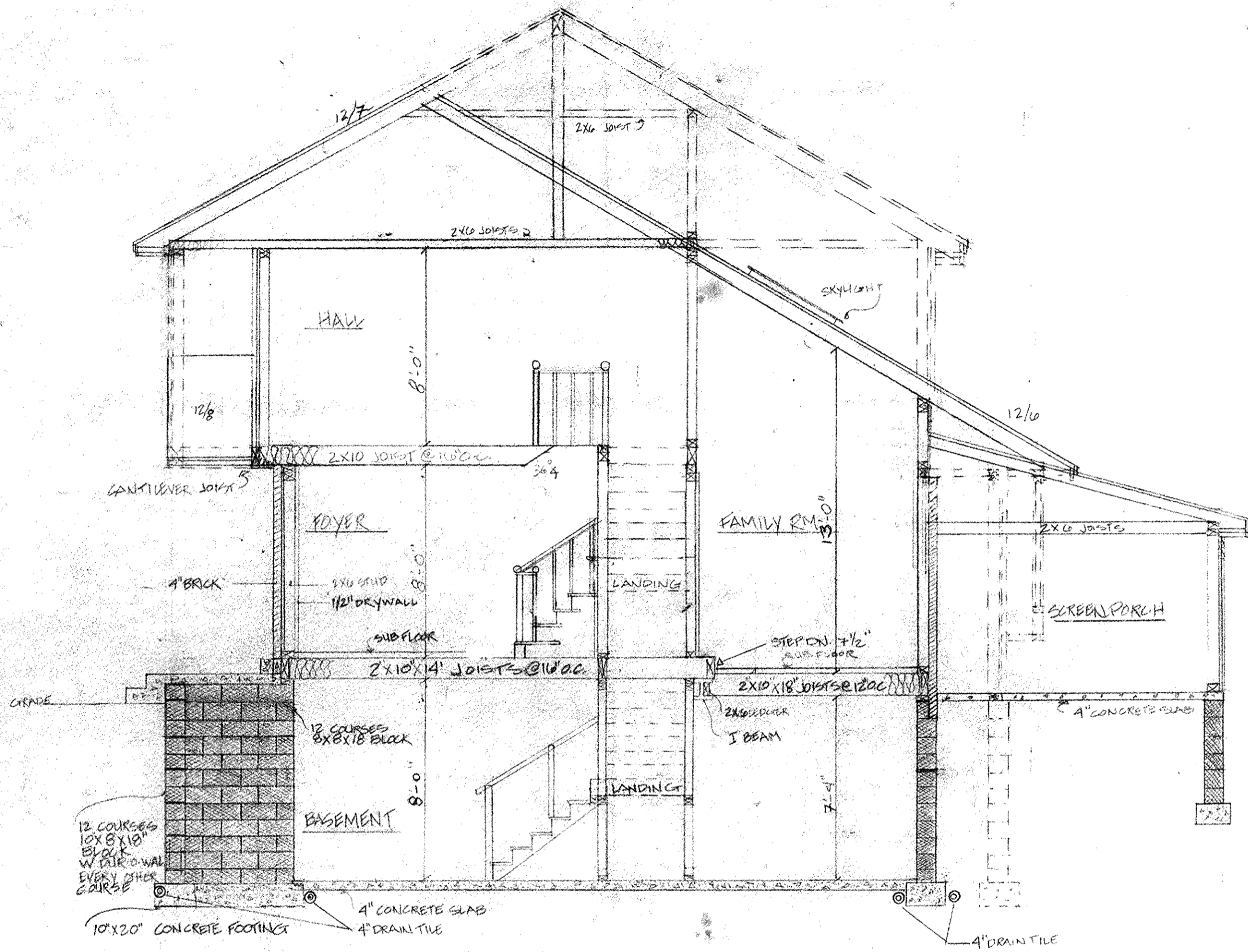
SECOND FLOOR PLAN

**ARMAND QUADRINI CONSTRUCTION INC.**  
 304 BONE, DEWATER, DELAWARE, BUILDING CONTRACTORS  
**BENTWOOD HOMES**  
 5887 STATE FARM RD., SAUNGERLANDS, NY 12157

DATE: REVISION:	6/28/87 CH. ENTIRE PLAN 10/19/87 CH. WINDOWS TO BEEL HALL 12/18/87 CH. DIM. TO 7' X 5'4"
LET #	35
BUILDING RESPONSIBLE FOR:	MR BROOKLY & MS. EMMER
JOB #	35
SHEET #	4
DATE	11-10-87
BY	D. CHAFFERS

DRAWINGS MAY NOT BE REPRODUCED OR TRANSMITTED IN ANY FORM OR BY ANY MEANS, ELECTRONIC OR MECHANICAL, WITHOUT PERMISSION FROM ARMAND QUADRINI CONSTRUCTION INC. ALL RIGHTS RESERVED. THE PLANES OR A PART THEREOF OR ANY PART THEREOF ARE THE PROPERTY OF ARMAND QUADRINI CONSTRUCTION INC. CONTRACTORS.





"AA" SECTION DETAIL ELEVATION

ARMAND QUADRINI  
CONSTRUCTION, INC.  
REAL ESTATE, DEVELOPER,  
CONTRACTOR, BRICKLAYER, CARPENTER

WENTWODE HOMES

1788 STATE FARM ROAD, WEST HAVEN, CT 06611

REVISION

35

MR. BRODSKY & Ms. BANIER

DRAWINGS MAY NOT BE REPRODUCED WITHOUT PERMISSION FROM ARMAND QUADRINI CONSTRUCTION, INC. ALL RIGHTS RESERVED. THIS DRAWING IS THE PROPERTY OF ARMAND QUADRINI CONSTRUCTION, INC. (DESIGN DEPT.)

DATE: 1/22/88

35

6